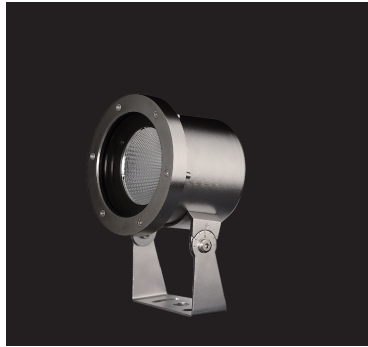


NEW 2016



## Underwater LED Flood Light

Completely Hard Chromeplated Stainless Steel Housing & Accessory

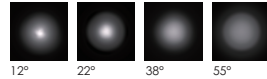
### LED Colour Temperature

- 3000K
- 6000K

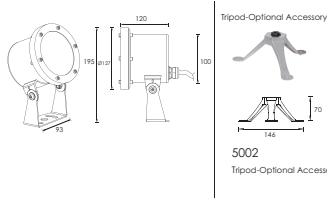
### Optics

R18	R0112C075XL 12°
	R0122C075XL 22°
	R0135C075XL 38°
	R0155C075XL 55°

### R18



### Outer Dimensions



Tripod-Optional Accessory

5002

Tripod-Optional Accessory

**Warning:**  
Must be installed under the water to prevent the light from burning up because of over-heating.

### Material specifications

Front cover & Housing	Hard chromeplated molding shaped stainless steel sus 316L
PMMA	13mm
Gasket	Silicone gasket
LED	Nichia
Cable gland	P-68 PG-11 copper with nickel-coated
PCB	Excellent heat conductivity aluminum, coefficient of heatConductivity2.0w/mk
LED Driver	Constant Voltage Input,Constant Current Output
Power Cable	H07RN-F 2X1.0mm² L=3.0m
Application environment	Temperature of water between -20°C~40°C, less than 1 meter depth.

NEW 2016



## Underwater LED Flood Light

Completely Hard Chromeplated Stainless Steel Housing & Accessory

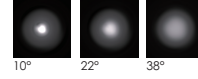
### LED Colour Temperature

- 3000K
- 6000K

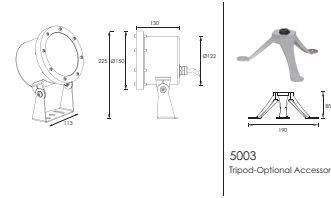
### Optics

R19	R0110C095XL 10°
	R0122C095XL 22°
	R0138C095XL 38°

### R19



### Outer Dimensions



Tripod-Optional Accessory

5003

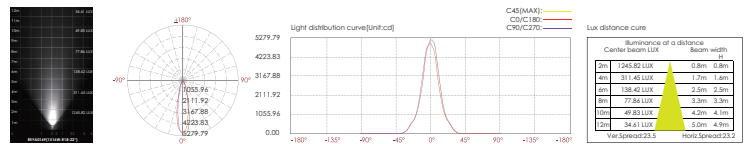
Tripod-Optional Accessory

**Warning:**  
Must be installed under the water to prevent the light from burning up because of over-heating.

### Material specifications

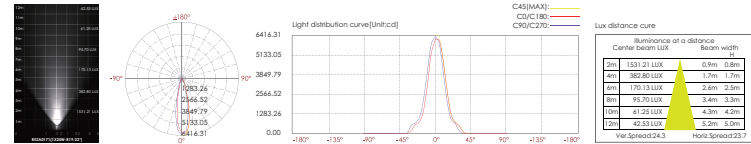
Front cover & Housing	Hard chromeplated molding shaped stainless steel sus 316L
PMMA	13mm
Gasket	Silicone gasket
LED	Nichia
Cable gland	P-68 PG-11 copper with nickel-coated
PCB	Excellent heat conductivity aluminum, coefficient of heatConductivity2.0w/mk
LED Driver	Constant Voltage Input,Constant Current Output
Power Cable	H07RN-F 2X1.0mm² L=3.0m
Application environment	Temperature of water between -20°C~40°C, less than 1 meter depth.

Item	Light source	Reflector	The manufacturer selected lens degree(°)B1/2	Input voltage(v)	typical operating current(mA)	typical consumption(w)	Typical luminance(lm)	IK rate
R5YA0169	1x16W	R18	22°	24V DC	700	17	Cool white =1344 Warm white =1183	10



256

Item	Light source	Reflector	The manufacturer selected lens degree(°)B1/2	Input voltage(v)	typical operating current(mA)	typical consumption(w)	Typical luminance(lm)	IK rate
R5ZA0171	1x20W	R19	22°	24V DC	1000	24	Cool white =1678 Warm white =1478	10



257