



High Luminance COB LED Flood Light

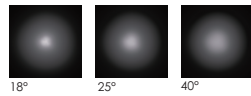
LED Colour Temperature Optics

3000K
6000K

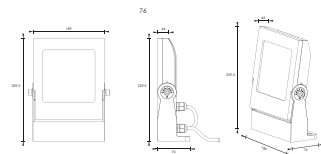
R5
R0118C004XL 18°
R0125C044XL 25°
R0140C044XL 40°



R5



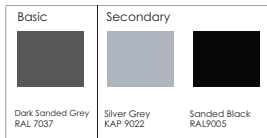
Outer Dimension Unit:mm



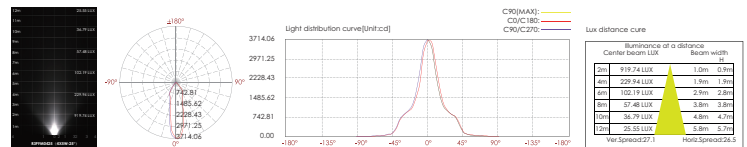
Material specifications

Housing	12# Die-casting powder coated aluminum, T=60-80um, Adhesion of ISO class 1/ASTM class 48
LED	Nichia COB LED
Light Window	Tempered glass, T=4mm
Cable gland	IP-68 PG-9 PVC
Gasket	Tooling shaped seal
Bracket	Powder coated aluminum
Reflector	Optical Reflector efficiency>90%
Power Cable	H05RN-F 2X1.0mm ² L=2.0m(low voltage) H05RN-F 3X1.0mm ² L=2.0m(high voltage)

Housing color Option



Item	Light source	Reflector	The manufacturer selected lens degree(°)θ1/2	Input voltage(v)	Typical operating current(mA)	Typical consumption(w)	Typical luminance(lm)	IK rate
R3PFM0425	4x5W	R5	25°	24V DC 120/240	2.4 V = 1279 120V = 196 240V = 114	2.4 V = 30.7 120V = 23.3 240V = 24.0	Cool white =2204 Warm white =1704	08



High Luminance COB LED Flood Light

LED Colour Temperature Optics

• 3000K
• 6000K

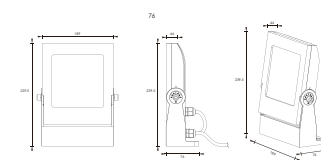
R12
R01100C136RD 100°



R12



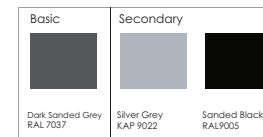
Outer Dimension Unit:mm



Material specifications

Housing	12# Die-casting powder coated aluminum, T=60-80um, Adhesion of ISO class 1/ASTM class 48
LED	Nichia COB LED
Light Window	Tempered glass, T=4mm
Cable gland	IP-68 PG-9 PVC
Gasket	Tooling shaped seal
Bracket	Powder coated aluminum
Reflector	Optical Reflector efficiency>90%
Power Cable	H05RN-F 2X1.0mm ² L=2.0m(low voltage) H05RN-F 3X1.0mm ² L=2.0m(high voltage)

Housing color Option



Item	Light source	Reflector	The manufacturer selected lens degree(°)θ1/2	Input voltage(v)	Typical operating current(mA)	Typical consumption(w)	Typical luminance(lm)	IK rate
R3PFM0171	1x20W	R12	100°	24V DC 120/240	2.4 V = 960 120V = 205 240V = 105	2.4 V = 23.0 120V = 24.0 240V = 24.4	Cool white=1885 Warm white=1678	08

