

NEW 2016



Diffused Beam
Recessed LED Wall Light
Stainless steel front cover with Matte Surface

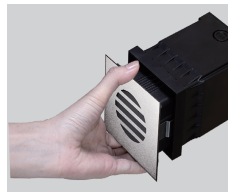


LED Colour Temperature

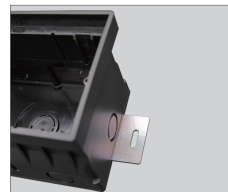
- 2000K
- 3000K
- 6000K

Optics

- N/A



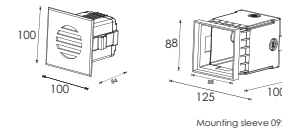
The clips have been specially modified and upgraded to have a stronger structure in order to make up the absence of the screw fixing.



There are two metals support plate on the bottom of the sleeve. It is used for fixing and preventing the mounting sleeve shifting while filling the concrete. These will simply install and electrician while they are recessing the sleeves.

Outer Dimensions

Unit:mm



Material specifications

Housing	12* Die-casting grey powder coated aluminum. T=60-80um Adhesion of ISO class 1/ASTM class 4B
Front cover	Hard chromeplated Stainless steel 316*
LED	SMD3030 type LED
Cable gland	IP-67 copper and nicked coated
Gasket	Molding shaped silicone seal
LED Driver	Constant Voltage Input.Constant Current Output
Operating temperature	-20°C~40°C
Power Cable	H05RN-F 2X1.0mm² L=0.5m (low voltage) H05RN-F 3X1.0mm² L=0.5m (high voltage)
Mounting sleeve	ABS 092*
Dimmable Support	Triac PWM 1-10 Dim

Item	Light source	Input voltage(v)	Typical operating current(mA)	Typical consumption(w)	Typical luminance(lm)	K rate
D1HC1634	16*0.2W	24V DC 120/240	24V = 125 120V = 58 240V = 34	24V = 3.0 120V = 3.7 240V = 3.8	Cool white =35.0 Warm white =32.0	09

