

NEW 2016

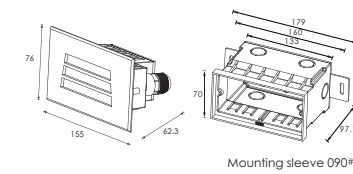


Diffused Beam Recessed LED Wall Light

Stainless steel front cover with Matte Surface



Outer Dimensions



Mounting sleeve Ø90#

Material specifications

Housing	12" Die-casting grey powder coated aluminum, T=60-80um Adhesion of ISO class 1/ASTM class 4B
Front cover	Hard chrome-plated Stainless steel 316#
LED	SMD3030 type LED
Cable gland	IP-67 copper and nicker coated
Gasket	Molding shaped silicone seal
LED Driver	Constant Voltage Input, Constant Current Output
Operating temperature	-20°C~40°C
Power Cable	HO5RN-F 2X1.0mm² L=0.5m (low voltage) HO5RN-F 3X1.0mm² L=0.5m (high voltage)
Mounting sleeve	A85 Ø90#
Dimmable Support	TiLac PWM 1-10 DalI

LED Colour Temperature

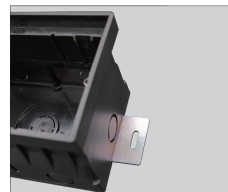
- 2000K
- 3000K
- 6000K

Optics

- N/A



The clips have been specially modified and upgraded to have a stronger structure in order to make up the absence of the screw fixing.



There are two metals support plate on the bottom of the sleeve. It is used for fixing and preventing the mounting sleeve shifting while filling the concrete. These will simply installer and electrician while they are recessing the sleeves.

Item	Light source	Input voltage(V)	Typical operating current(mA)	Typical consumption(W)	Typical luminance(lm)	IK rate
D1CC1834	18*0.2W	24V DC 120/240	24V = 125 120V = 56 240V = 29	24V = 3.0 120V = 3.4 240V = 3.5	Cool white =53 Warm white =53	09

