

## Recessed RGB LED Pool Light

Completely Stainless Steel SUS 316<sup>#</sup> Housing and Accessory

### LED Wave Length

- R =620-630 nm
- G =520-530 nm
- B =460-470 nm

### Optics

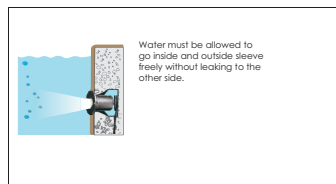
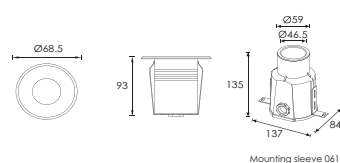


### B34D



30°

### Outer Dimensions



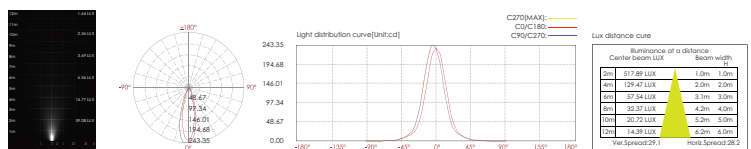
**Warning:**  
Must be installed under the water to prevent the light from being burnt off because of over-heating.

### Material specifications

Front cover & Housing	Hard chromeplated Molding shaped stainless steel SUS 316 <sup>#</sup>
Light Window	Step tempered glass,T=7mm
Gasket	Silicone Gasket
Lens	Optical lens,efficiency≥85%
PCB	Excellent heat conductivity aluminum,coefficient of heat Conductivity22.0w/mk
LED Driver	Constant Voltage Input,Constant Current Output
Power Cable	H05RN-F 4X0.75mm² L=3.0m
Application environment	Temperature of water between -20°C~40°C less than 1 meter depth.
Mounting sleeve	ABS Ø61 <sup>#</sup>



366



## Recessed RGB LED Pool Light

Completely Stainless Steel SUS 316<sup>#</sup> Housing and Accessory

### LED Wave Length

- R =620-630 nm
- G =520-530 nm
- B =460-470 nm

### Optics

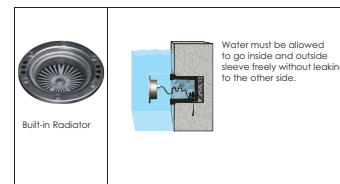
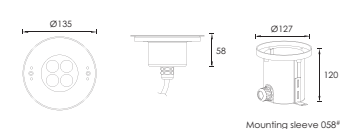


### B8



25°

### Outer Dimensions



**Warning:**  
Must be installed under the water to prevent the light from being burnt off because of over-heating.

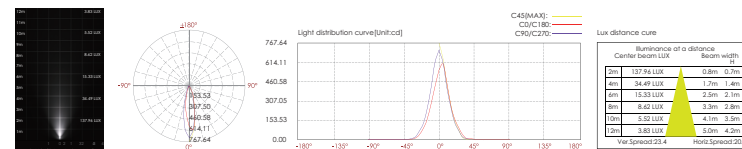


### Material specifications

Front cover & Housing	Hard chromeplated molding shaped stainless steel SUS 316 <sup>#</sup>
Light Window	Step tempered glass,T=8mm
Gasket	Silicone gasket
PCB	Excellent heat conductivity aluminum,coefficient of heatConductivity22.0w/mk
Cable gland	IP-68 PG-11 copper with nickel-coated
LED Driver	Constant Voltage Input,Constant Current Output
Power Cable	H07RN-F 4X1.0mm² L=3.0m
Application environment	Temperature of water between -20°C~40°C less than 1 meter depth.
Mounting sleeve	ABS Ø58 <sup>#</sup>



Item	Light source	Lens	The manufacturer selected lens degree(°)91/2	Input voltage(V)	Typical operating current(mA)	Typical consumption(W)	Typical luminance(lm)	IK rate
B4XC0418	4x3W RGB 3in1 Full color	B8	25°	24V DC	R = 200 G = 215 B = 215	15	162	08



367