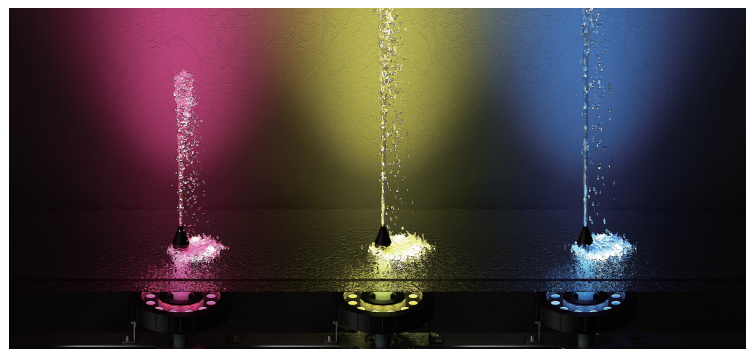




NEW 2016

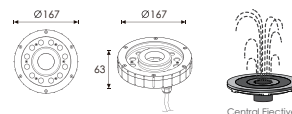
Central Ejective RGB LED Fountain Light

Made by High thermal Nylon



Outer Dimention

Unit:mm



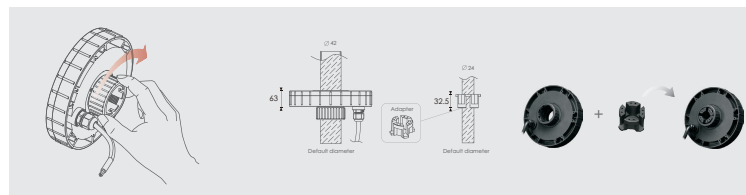
Central Ejective

Warning:

Must be installed under the water to prevent the light from being burnt off because of over-heating.

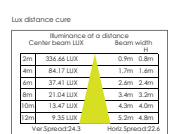
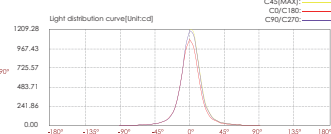
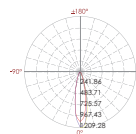
Material specifications

Front cover & Housing	Made by High thermal Nylon
Gasket	Silicone Gasket
Light Window	Step tempered glass, T=8mm
Lens	Optical lens, efficiency>85%
Cable gland	IP-68 PG-11 copper with nickel-coated
PCB	Excellent heat conductivity aluminum, coefficient of heat conductivity<2.0w/mk
LED Driver	Constant Voltage Input,Constant Current Output
Application environment	Temperature of water: between -20°C~40°C less than 1 meter depth.
Power cable	H05RN-F 4X0.75mm L=3m



The converter of Sprinkler pipe diameter

Item	Light source	Lens	The manufacturer selected lens degree(°)91/2	Input voltage(V)	Typical operating current(mA)	Typical consumption(W)	Typical luminance(lm)	IK rate
B4E1205	12x1.5W RG8 3IN1 Full color	B24	25°	24V DC	R = 250 G = 250 B = 250	18	340	07



LED Wave Length	Optics
• R = 620-630 nm • G = 520-530 nm • B = 460-470 nm	B24 101250020ME 25°

B24



25°