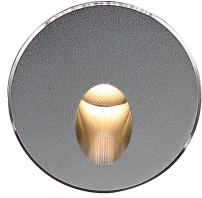


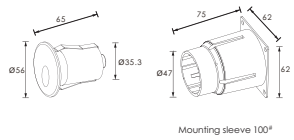
NEW 2016



Recessed LED Stair Light and Wall Light
Stainless steel front cover with Matte Surface

- | | |
|---|---|
| LED Colour Temperature | Optics |
| <ul style="list-style-type: none"> • 2000K • 3000K • 6000K | <ul style="list-style-type: none"> • N/A |

Outer Dimensions



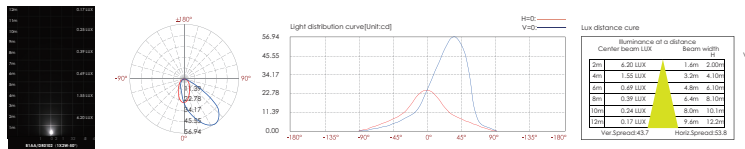
Material specifications

Housing	12" Die-casting aluminum T=20-25μm, Adhesion of BQ class 1/ ASTM class 4B high temperature painting
Front cover	Hard chrome-plated stainless steel SUS 316*
Light Source	Emitter type power LED
LED Driver	Constant Voltage Input, Constant Current Output
Operating temperature	-20°C~40°C
Power Cable	H05RN-F 2X1.0mm ² L=0.3m (low voltage)
Mounting sleeve	ABS 100*
Dimmable Support	Triac PWM 1-10 Dali

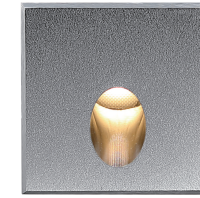
Lighting Effect demo & Installation



Item	Light source	Lens	The manufacturer selected lens degree(°)θ1/2	Input voltage(V)	Typical operating current(mA)	Typical consumption(W)	Typical luminance(m)	IK rate
B1AAR0102	1x2W	L0180C010AR	50°	24V DC	100	2.4	Cool white =40 Warm white =36	10



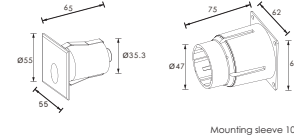
NEW 2016



Recessed LED Stair Light and Wall Light
Stainless steel front cover with Matte Surface

- | | |
|---|---|
| LED Colour Temperature | Optics |
| <ul style="list-style-type: none"> • 2000K • 3000K • 6000K | <ul style="list-style-type: none"> • N/A |

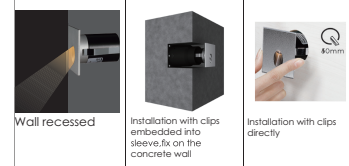
Outer Dimensions



Material specifications

Housing	12" Die-casting aluminum T=20-25μm, Adhesion of BQ class 1/ ASTM class 4B high temperature painting
Front cover	Hard chrome-plated stainless steel SUS 316*
Light Source	Emitter type power LED
LED Driver	Constant Voltage Input, Constant Current Output
Operating temperature	-20°C~40°C
Power Cable	H05RN-F 2X1.0mm ² L=0.3m (low voltage)
Mounting sleeve	ABS 100*
Dimmable Support	Triac PWM 1-10 Dali

Lighting Effect demo & Installation



Item	Light source	Lens	The manufacturer selected lens degree(°)θ1/2	Input voltage(V)	Typical operating current(mA)	Typical consumption(W)	Typical luminance(m)	IK rate
B1AAS0102	1x2W	L0180C010AR	50°	24V DC	100	2.4	Cool white =54 Warm white =49	10

